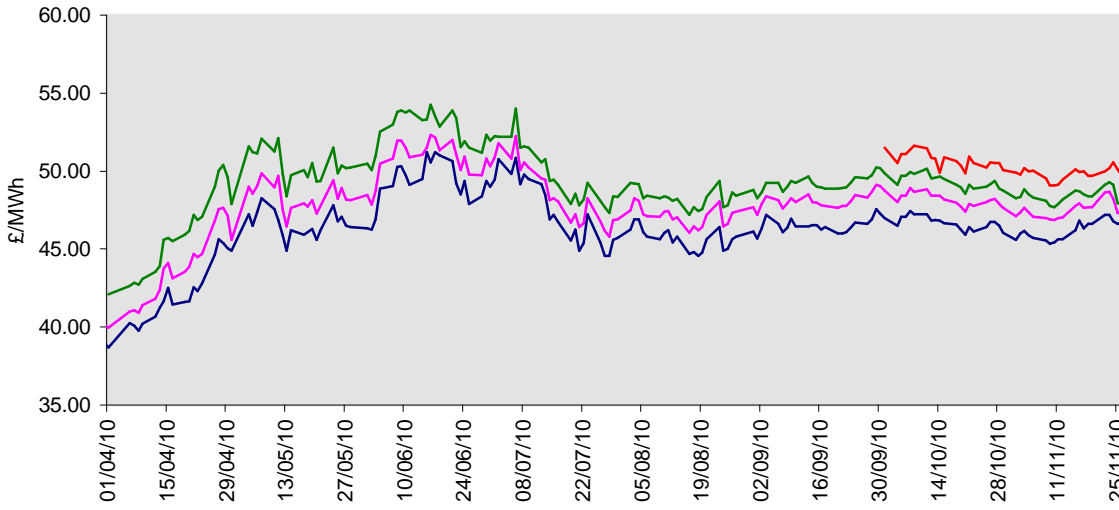




Current energy wholesale rates for **fixed-price** contracts.

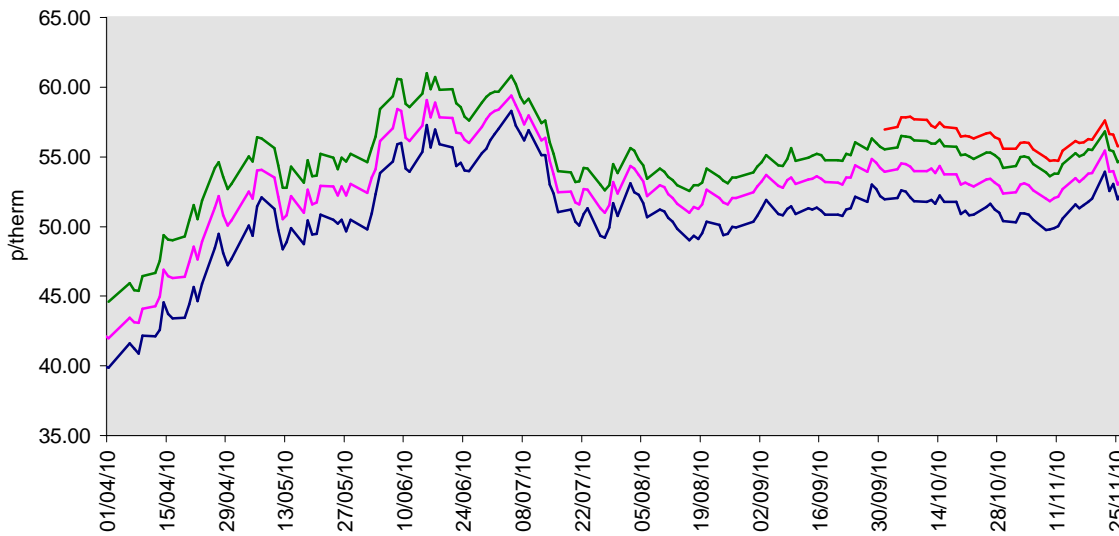
Closing position on
26 November 2010

baseload electricity



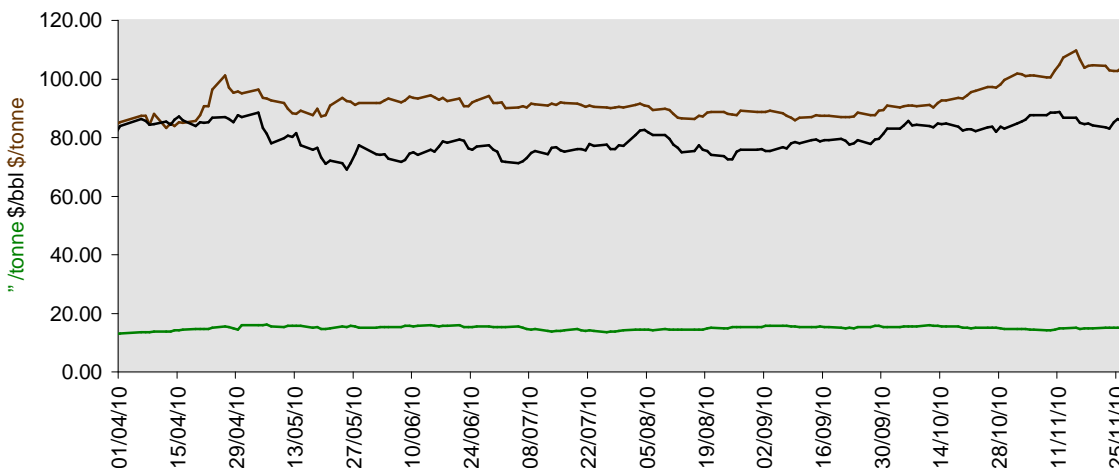
12 month contract commencing:	
Oct-12	49.67
Apr-12	48.00
Oct-11	47.35
Apr-11	46.73

wholesale gas



12 month contract commencing:	
Oct-12	55.83
Apr-12	54.83
Oct-11	53.40
Apr-11	52.48

coal oil carbon



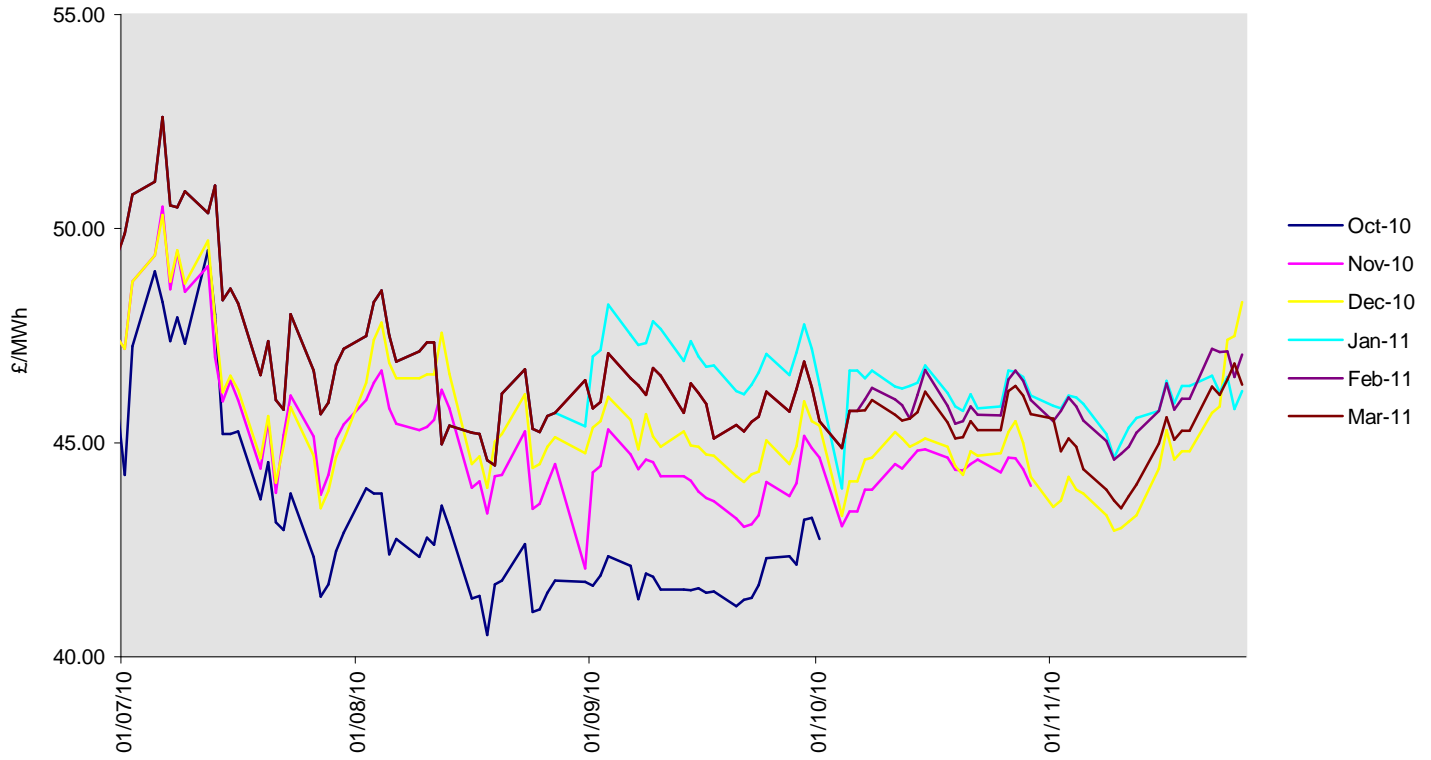
Coal	104.00
Oil	85.50
Carbon	15.07



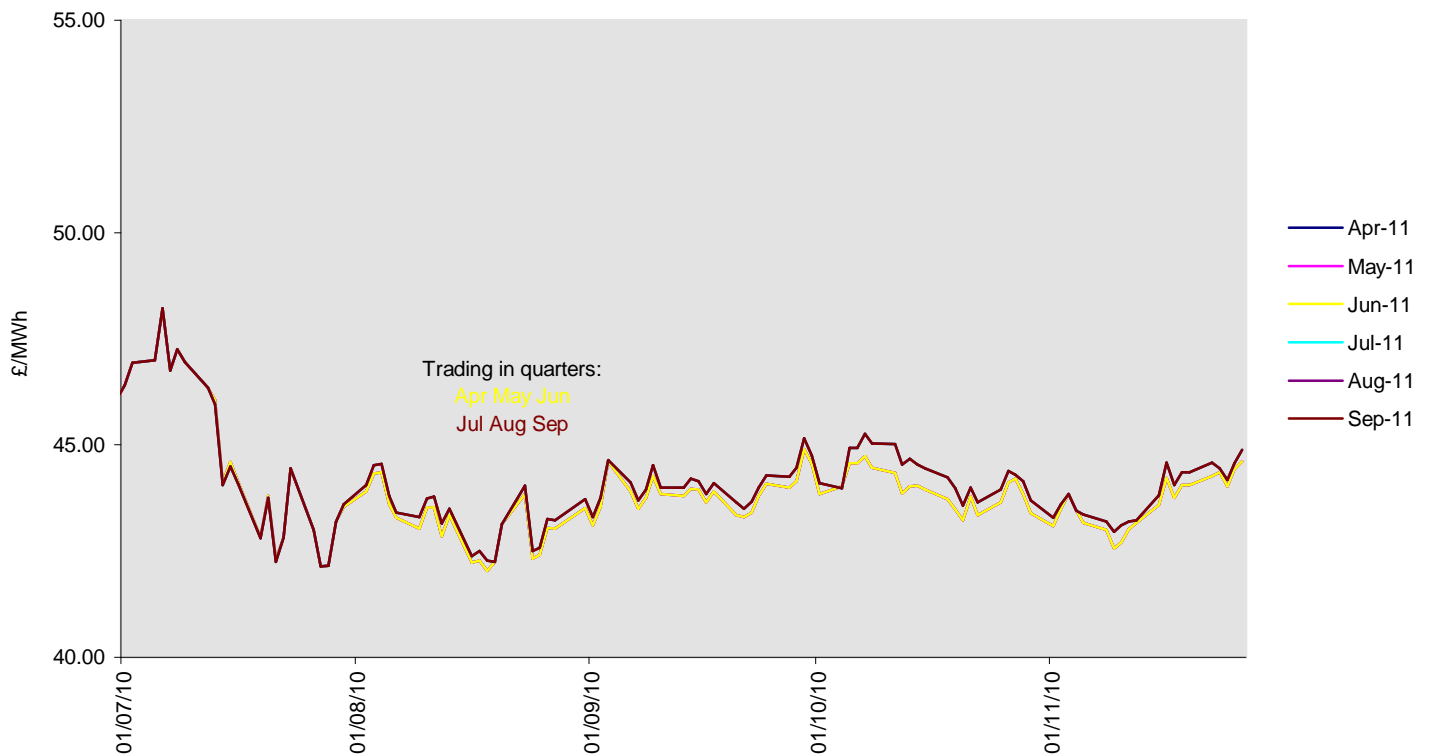
Closing position on
26 November 2010

Current energy wholesale rates for **flexible** contracts.

electricity winter 2010/11



electricity summer 2011

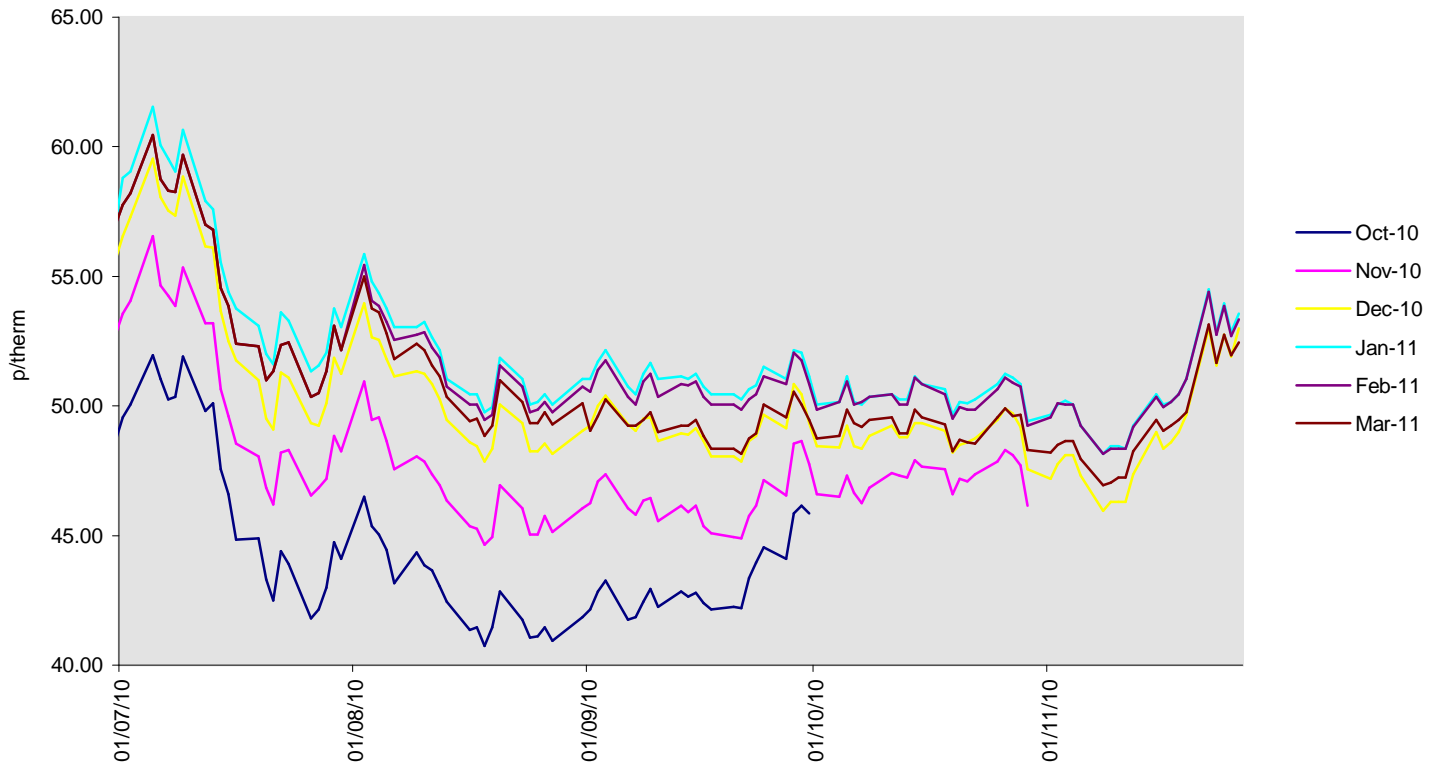




Closing position on
26 November 2010

Current energy wholesale rates for **flexible** contracts.

gas winter 2010/11



gas summer 2011

